



Penn Township Comprehensive Plan Steering Committee Meeting

Penn Township, Butler County, PA

October 11, 2023

AGENDA

1. Updates on Online Survey
2. Tour Summary
3. Interview Summary
4. Future Land Use Activity
5. Next Steps

SURVEY UPDATES

- As of now, we have 109 responses
 - 103 are from Township residents
 - 4 are from a nearby municipality
 - 2 others
- How long do we want to leave the survey open?
- Are there any other ideas for how we can spread the word?

COMMUNITY TOUR RESULTS



- Some of the key things we noticed:
 - Farmland is well-distributed across the Township
 - Farms are active and are a large asset of the community
 - Great mixture of public and private recreational and event spaces (Succop, The Mansion, Renfrew, Harcrest, golf courses, etc.)
 - Airport is a large economic entity, but residents are weary of potential growth and business development
 - There are few residential subdivision communities

TOWNSHIP STAFF INTERVIEWS RESULTS



- Some of the key things we heard:
 - Municipal departments are generally adequate, but some additional staff may be necessary as Harcrest Park develops
 - Township wants to be progressive in terms of infrastructure but prohibit uncontrolled growth
 - Route 8 has potential to be a more substantial commercial corridor
 - Communications with residents can be improved
 - The Airport is both an asset and a hinderance

FUTURE LAND USE ACTIVITY- WHAT IS A FUTURE LAND USE MAP?

- The future land use map is a community's visual guide to future planning.
- The map should bring together most, if not all, of the elements of the Comprehensive Plan such as natural resources, economic development, housing, and transportation.
- The Future Land Use map is **not** an official map nor is it a zoning map
- Shows general land use categories (commercial, residential, agricultural, etc.)

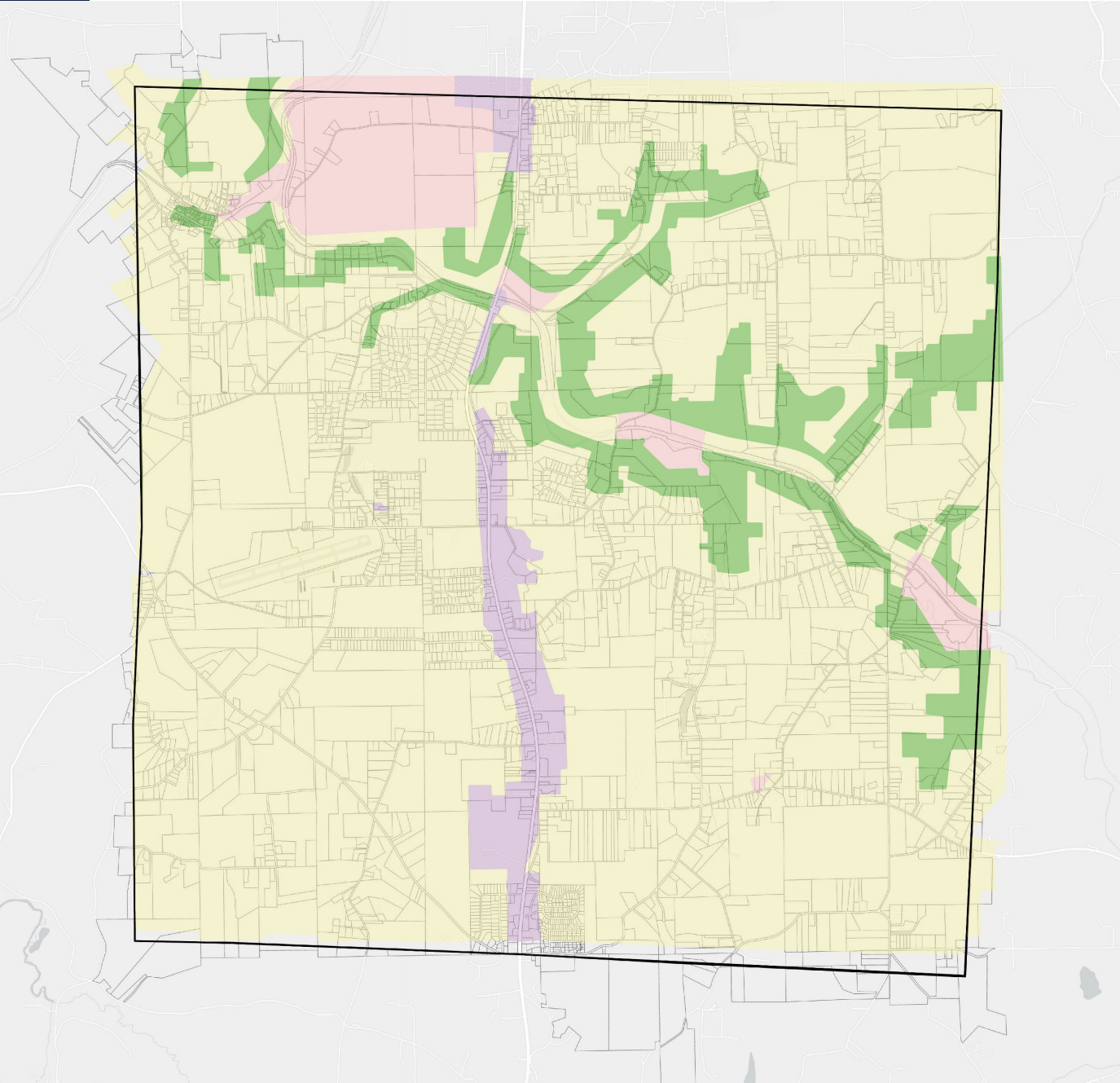
FUTURE LAND USE ACTIVITY- WHY DO WE NEED A FUTURE LAND USE MAP?

- Pennsylvania's MPC requires a Future Land Use Map as part of the Comprehensive Planning process
- These maps can help guide future Zoning Ordinance changes
- It is useful for a community to share their vision for the future of their community

FUTURE LAND USE ACTIVITY- INSTRUCTIONS

- Use sharpies to mark up the maps with places you'd like to see preserved, places you'd like to see developed (and what kind of development)
- Items to consider:
 - Areas that cannot be developed, such as water and steep slopes
 - Areas that are difficult to develop, such as flood plains and wetlands
 - Areas with prime soils
 - Consider existing and future development trends and where they should be concentrated
 - Consider existing and future facilities and utilities

FUTURE LAND USE ACTIVITY



PENN TOWNSHIP

Legend

- Penn Township
- Residential Districts (Residential Estate, One Family Residential, Renfrew Overlay, and Port O' Call Overlay)
- Conservancy District
- Commercial Districts (Neighborhood Commercial and Highway Commercial)
- Industrial District

0 0.2 0.4 Miles

N

Mapping derived from data.pa.gov, Esri, HERE, Garmin, SafeOrb, GeoTechnology, Inc, NPS, US Census Bureau, USGS, EPA, NPS, US Census Bureau, USGS.

10/4/2023 F:\0060\006045_0479\GIS\Project\PennTwp\

NEXT STEPS

- Close the Community Survey
 - Analyze the results
- Stakeholder Interviews
 - Need the final list of Key Stakeholders
- Next Steer Meeting – December?
- Begin Phase 2 – Plan Development